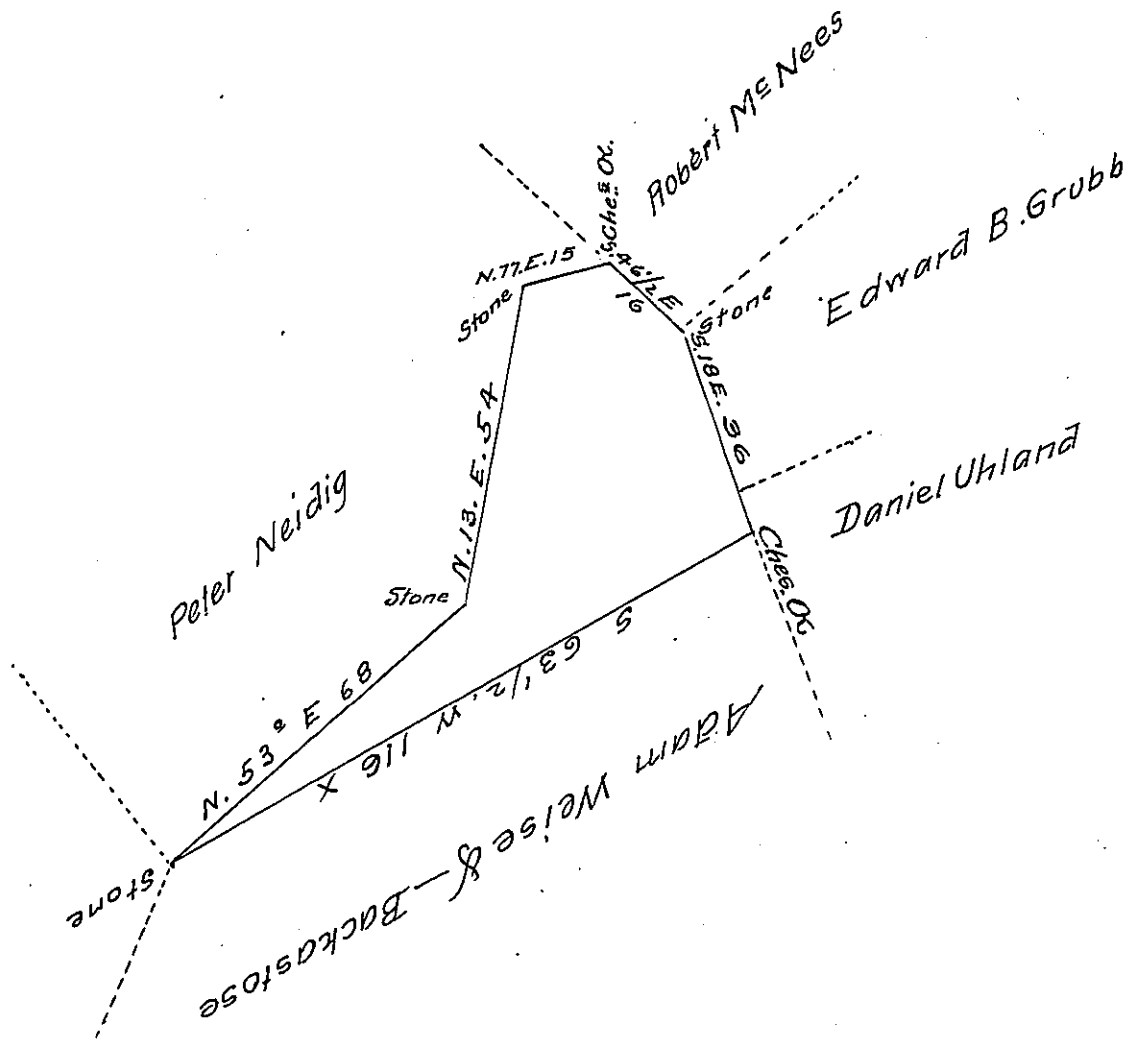


FORM NO. 1.



A Draught of a tract of land situate in East Hanover Township in the County of Lebanon containing Fourteen acres and an half and the usual allowance of six per Cent for roads &c. Surveyed the 15<sup>th</sup> day of November 1838 in pursuance of a warrant dated the 1<sup>st</sup> day of November 1838 granted to Adam Weise

Ezekiel Cherington D.S.

To John Taylor Esquire

Surveyor General of Pennsylvania

IN TESTIMONY that the above is a copy of the original remaining on file in the Department of Internal Affairs of Pennsylvania, made conformably to an Act of Assembly approved the 16th day of February 1833, I have hereunto set my hand and caused the Seal of said Department to be affixed at Harrisburg, this eighteenth day of December 1907

*Henry Howell*

Secretary of Internal Affairs.